

Press Release

AutoForm^{plus} R7 – Reports in Excel Format

Wilén b. Wollerau, Switzerland, June 8, 2017: AutoForm Engineering GmbH, the leading supplier of software solutions for the sheet metal forming industry, has integrated the generation of reports in Excel format within its latest software version AutoForm^{plus} R7. As a result, users can import and process Excel files as report templates directly in AutoForm-ReportManager as well as export reports generated in AutoForm-ReportManager to Excel. This important enhancement in AutoForm^{plus} R7 facilitates the generation of professional reports.

During each simulation which is carried out for a stamping part, typically a number of reports are generated. These reports must be efficiently stored, well-structured and available to all those involved in a project. In daily practice, many companies use their own report templates to facilitate the internal communication between departments. However, when collaborating later on with other companies, data which is not compatible or up-to-date can be a source of misinterpretation leading to time losses and increased costs.

AutoForm-ReportManager, which is an integrated part of AutoForm^{plus}, enables engineers to easily and rapidly create reports based on simulation results. The data from a simulation file can be easily included in the report, which is automatically updated to reflect the most current results.

The experience gathered through numerous projects has shown that Excel files are best suited to fulfill all of the requirements related to these types of reports. Taking this into account, the latest release AutoForm^{plus} R7 has been enhanced to better support the generation of reports. Report templates originally generated in Excel can now be imported and processed in AutoForm-ReportManager as well as saved to the simulation file. These report templates include mapped objects such as 3D views and plots, variables, diagrams, data sets and tables. Reports generated in AutoForm-ReportManager can be exported to Excel and used for any purposes independent of AutoForm software as well as exported as a template for other AutoForm simulations.

Dr. Markus Thomma, Corporate Marketing Director of AutoForm Engineering, stated: "Our latest software release AutoForm^{plus} R7 brings significant advantages and flexibility to users who generate reports on a daily basis. Reports now available in Excel format greatly facilitate communication of relevant information between different departments as well as between OEMs and suppliers."

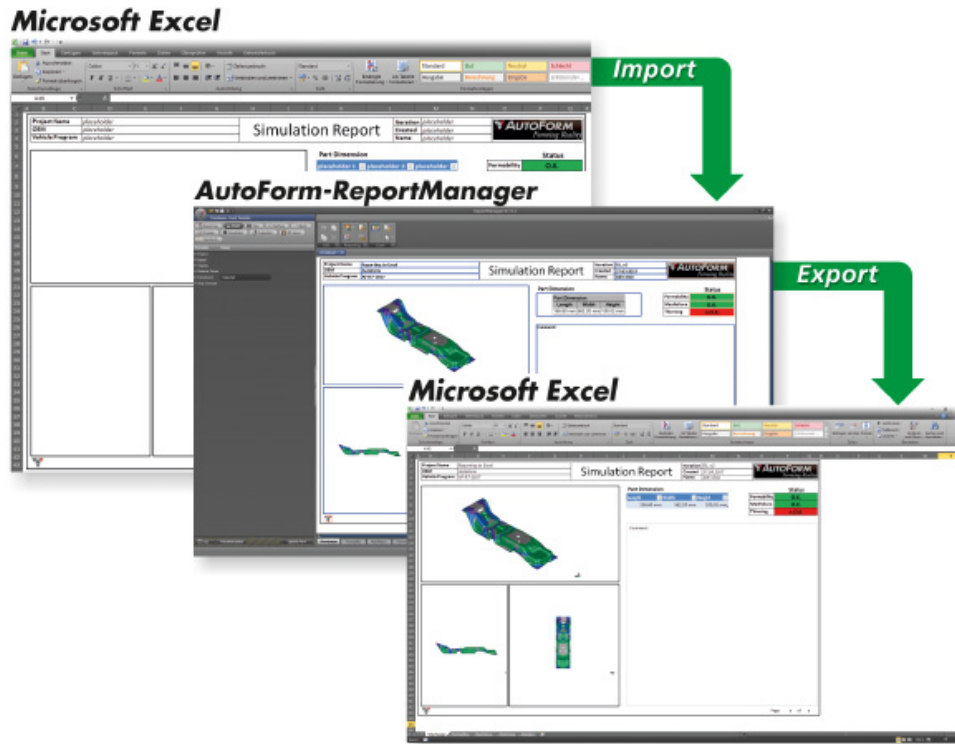
About AutoForm Engineering GmbH

AutoForm offers software solutions for the die-making and sheet metal forming industries along the entire process chain. With 300 employees dedicated to this field, AutoForm is recognized as the leading provider of software for product manufacturability, tool and material cost calculation, die face design and virtual process optimization. All of the Top 20 automotive OEMs and most of their suppliers have selected AutoForm as their software of choice. Besides its headquarters in Switzerland, AutoForm has offices in Germany, The Netherlands, France, Spain, Italy, USA, Mexico, Brazil, India, China, Japan and Korea. AutoForm is also present through its agents in more than 15 other countries. For detailed information please visit: www.autoform.com

Contact:

Dr. Markus Thomma
Corporate Marketing Director
AutoForm Engineering GmbH
Wilén b. Wollerau, Switzerland

Phone: +41 43 444 61 61
Email: markus.thomma@autoform.ch
www.autoform.com



Report templates generated in Excel can be imported and processed in AutoForm-ReportManager. In addition, reports generated in AutoForm-ReportManager can be exported to Excel.



Stamped part

If you need a high resolution image, please contact us.